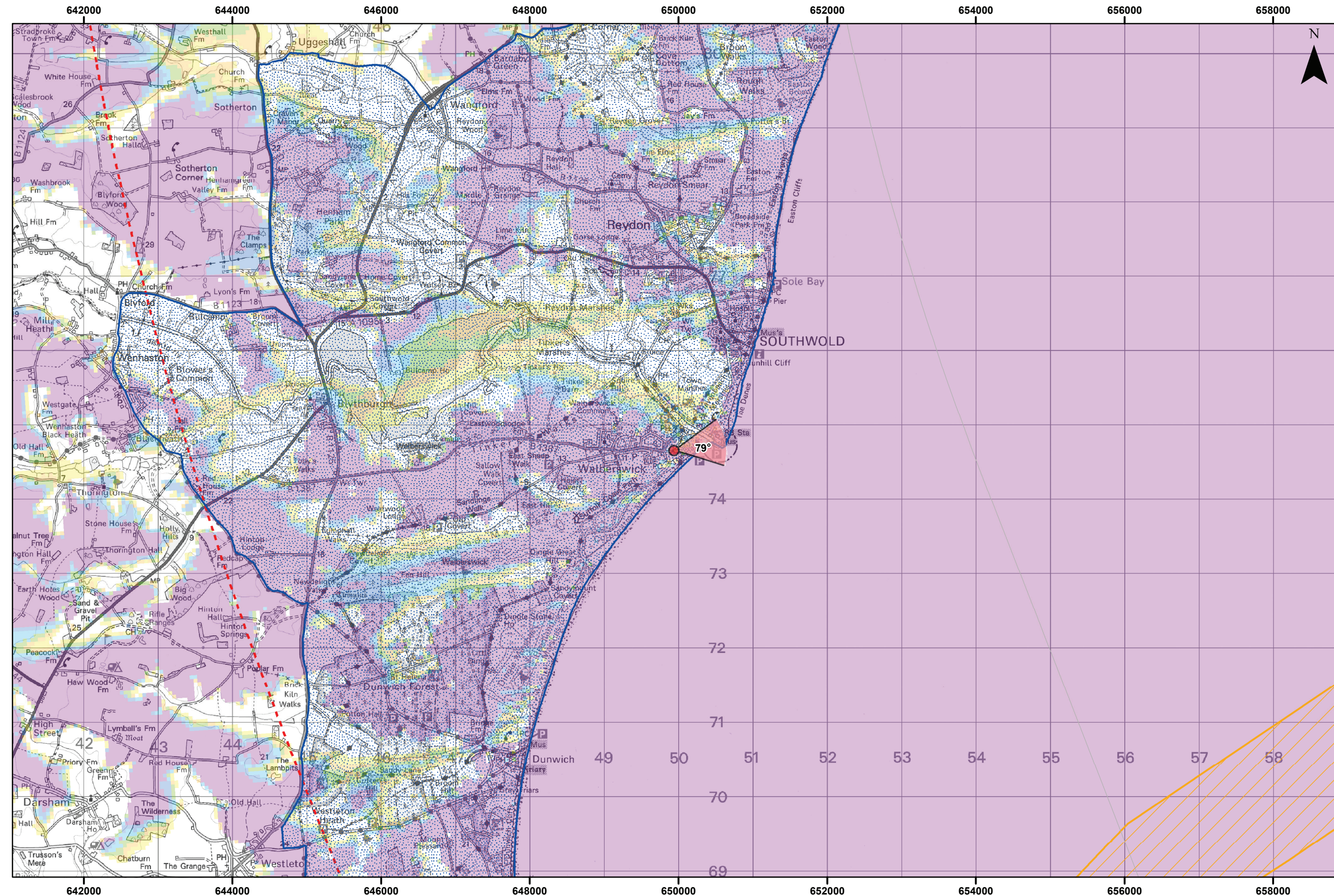


**Viewpoint Location Plan - 90 Degree View**  
Scale: 1:350,000



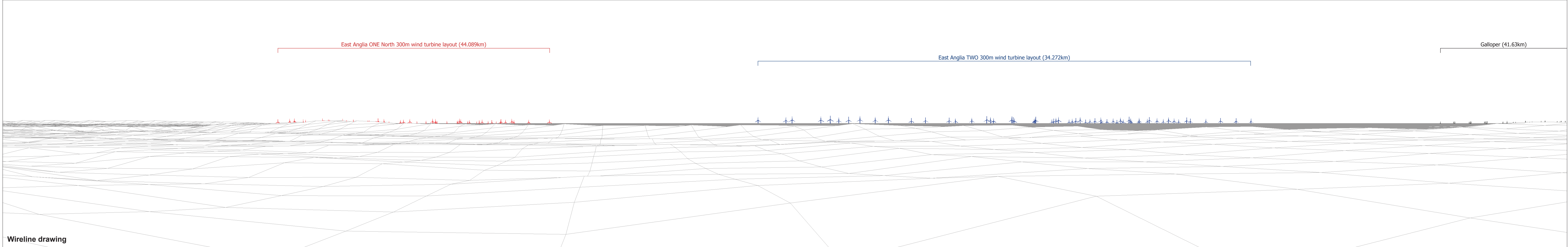
**Viewpoint Location Plan - 53.5 Degree View**  
Scale: 1:50,000



- Legend**
- Site Boundary
  - Proposed Cable Corridor
  - East Anglia ONE North 300m Wind Turbine Layout
  - Indicative Offshore Substation Platform (OSS)
  - ▲ Indicative Operational Meteorological Mast (OMM)
  - 10km Radii
  - 50km SLVIA Study
  - County Boundary
  - District Boundary
  - Suffolk Coast & Heaths AONB
- Cumulative Wind Energy Development:**
- Cumulative Turbine Locations
  - Active/In Operation
  - Pre-planning
- Blade Tip ZTV**
- No. of Blade Tips Theoretically Visible**
- 1 - 10
  - 11 - 20
  - 21 - 30
  - 31 - 40
  - 41 - 50
  - 51 - 53
- ▼ 90° Field of View
  - ▼ 53.5° Field of View

Rev	Date	By	Comment	Approved:	LT
2	28/08/2019	JM	Second issue	Prepared:	TH
1	14/05/2019	TH	First issue	Checked:	SM

East Anglia ONE North		
Viewpoint: 6 Walberswick		
<b>Drg No</b>	EA1N-DWF-ENV-REP-IBR-000365	
<b>Rev</b>	2	Datum: WGS 1984
<b>Date</b>	30/08/19	Projection: Zone 31N
<b>Figure</b>	28.30a	

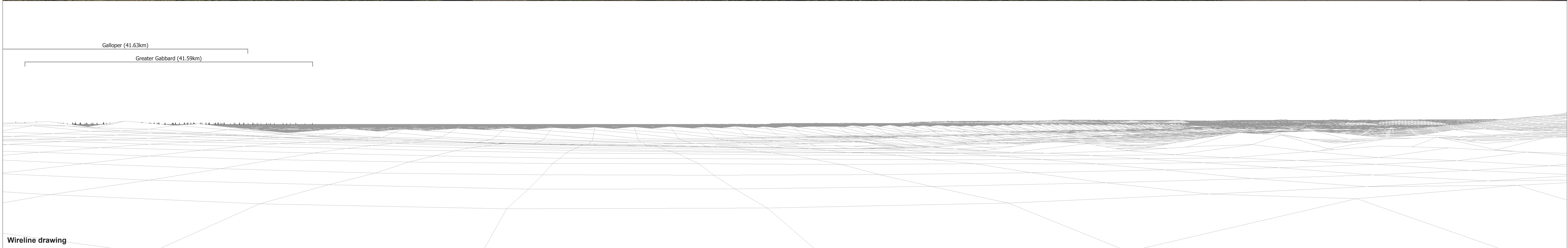


OS reference: 649936 E 274658 N  
 Eye level: 3.89 m AOD  
 Direction of view: 100°  
 Nearest turbine: 44.089 km

Horizontal field of view: 90° (cylindrical projection)  
 Principal distance: 522 mm

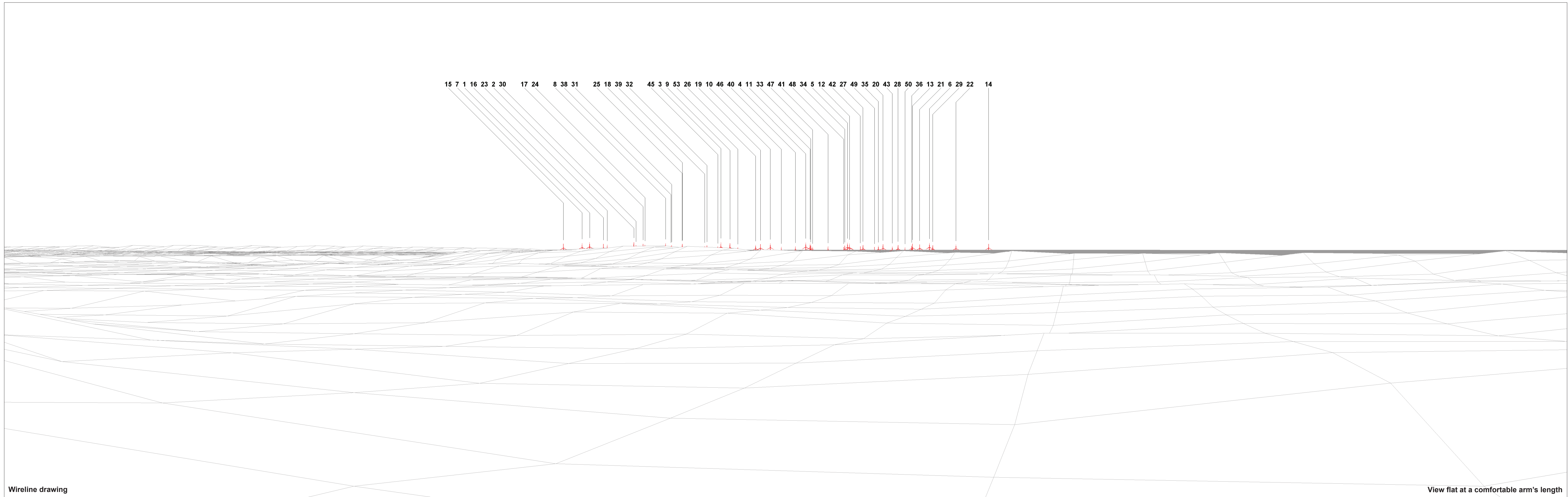
Camera: Canon EOS 5D Mark II  
 Lens: 50mm (Canon EF 50mm f/1.4)  
 Camera height: 1.5 m AGL  
 Date and time: 13/07/18, 17:58

Figure: 28.30b  
 Viewpoint 6: Walberswick



<b>OS reference:</b> 649936 E 274658 N	<b>Horizontal field of view:</b> 90° (cylindrical projection)	<b>Camera:</b> Canon EOS 5D Mark II
<b>Eye level:</b> 3.89 m AOD	<b>Principal distance:</b> 522 mm	<b>Lens:</b> 50mm (Canon EF 50mm f/1.4)
<b>Direction of view:</b> 190°		<b>Camera height:</b> 1.5 m AGL
<b>Nearest turbine:</b> 44.089 km		<b>Date and time:</b> 13/07/18, 17:58

**Figure: 28.30C**  
**Viewpoint 6: Walberswick**



Wireline drawing

View flat at a comfortable arm's length

OS reference: 649936 E 274658 N  
 Eye level: 3.89 m AOD  
 Direction of view: 79°  
 Nearest turbine: 44.089 km

Horizontal field of view: 53.5° (planar projection)  
 Principal distance: 812.5 mm  
 Paper size: 841 x 297 mm  
 Correct printed image size: 820 x 260 mm

Camera: Canon EOS 5D Mark II  
 Lens: 50mm (Canon EF 50mm f/1.4)  
 Camera height: 1.5 m AGL  
 Date and time: 13/07/18, 17:58

Figure: 28.30d  
 Viewpoint 6: Walberswick

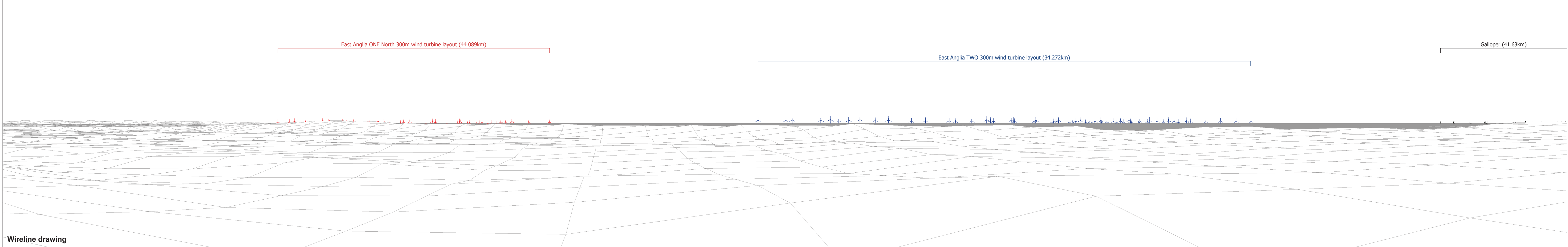


Photomontage

View flat at a comfortable arm's length

<b>OS reference:</b> 649936 E 274658 N	<b>Horizontal field of view:</b> 53.5° (planar projection)	<b>Camera:</b> Canon EOS 5D Mark II
<b>Eye level:</b> 3.89 m AOD	<b>Principal distance:</b> 812.5 mm	<b>Lens:</b> 50mm (Canon EF 50mm f/1.4)
<b>Direction of view:</b> 79°	<b>Paper size:</b> 841 x 297 mm	<b>Camera height:</b> 1.5 m AGL
<b>Nearest turbine:</b> 44.089 km	<b>Correct printed image size:</b> 820 x 260 mm	<b>Date and time:</b> 13/07/18, 17:58

**Figure: 28.30e**  
**Viewpoint 6: Walberswick**

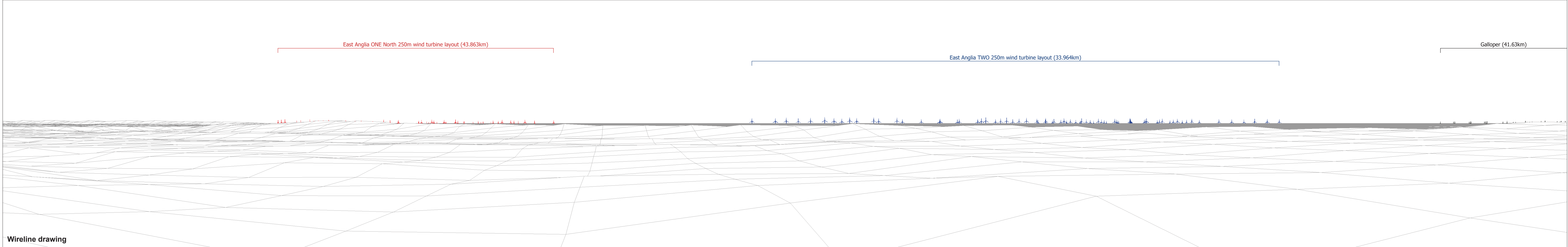


OS reference: 649936 E 274658 N  
 Eye level: 3.89 m AOD  
 Direction of view: 100°  
 Nearest turbine: 44.089 km

Horizontal field of view: 90° (cylindrical projection)  
 Principal distance: 522 mm

Camera: Canon EOS 5D Mark II  
 Lens: 50mm (Canon EF 50mm f/1.4)  
 Camera height: 1.5 m AGL  
 Date and time: 13/07/18, 17:58

Figure: 28.30f  
 Viewpoint 6: Walberswick



<b>OS reference:</b> 649936 E 274658 N	<b>Horizontal field of view:</b> 90° (cylindrical projection)	<b>Camera:</b> Canon EOS 5D Mark II
<b>Eye level:</b> 3.89 m AOD	<b>Principal distance:</b> 522 mm	<b>Lens:</b> 50mm (Canon EF 50mm f/1.4)
<b>Direction of view:</b> 100°		<b>Camera height:</b> 1.5 m AGL
<b>Nearest turbine:</b> 43.863 km		<b>Date and time:</b> 13/07/18, 17:58

**Figure: 28.30g**  
**Viewpoint 6: Walberswick**